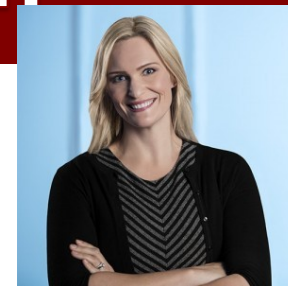


FEHA/ADA

Creating and Managing a Comprehensive Disability Compliance Program

January 27, 2017

9:30am-5:00pm



Rachel Shaw

Focus areas will include:

- ⇒ Creating a FEHA/ADA Compliant Interactive Process
- ⇒ Making Reasonable Accommodation Decisions
- ⇒ Worker' Compensation & FEHA/ADA Coordination
- ⇒ Managing Excessive Leave & Leave Abuse Issues
- ⇒ Ed Code 39-Month Reemployment List & FEHA/ADA

Cost: \$100/person

To register:

<https://feha-ada.eventbrite.com>

If you have questions, please contact
Education Services at 415-499-5870

Join us in a "hands-on" interactive process and leave management. Rachel Shaw is one of the highest rated trainers in California and will expertly guide you through the development, or enhancement of a comprehensive disability management program and how to use it to better manage accommodation request and leave usage issues.